



## Exodus Overland XJ Roof Rack Installation



The XJ Overland Roof Rack is designed to add versatility and capability to your Jeep Cherokee XJ. While this user manual is very simple and easy to understand, there are very important pieces of information contained herein. It is your responsibility to read this manual fully prior to beginning installation of the XJ Overland roof rack. Under no circumstances should you begin installation without fully reading and fully understanding these instructions. The XJ Overland Roof rack should be installed by licensed mechanics and/or trained mechanics to ensure safety, stability, proper mounting and proper function of the rack as a system.

If at ANY moment you have questions about the installation procedure, STOP IMMEDIATELY.

Our Email: [CS@Exodus-Overland.com](mailto:CS@Exodus-Overland.com)

Email us with your questions and we will provide fast assistance for your questions.

Approximate Installation Time: 1 Hour

Number of People Needed for Assembly / Install: 2 people

Tools Needed: A 3/8" Open end Wrench or a 3/8" socket with either a 1/4" or 3/8" Driver

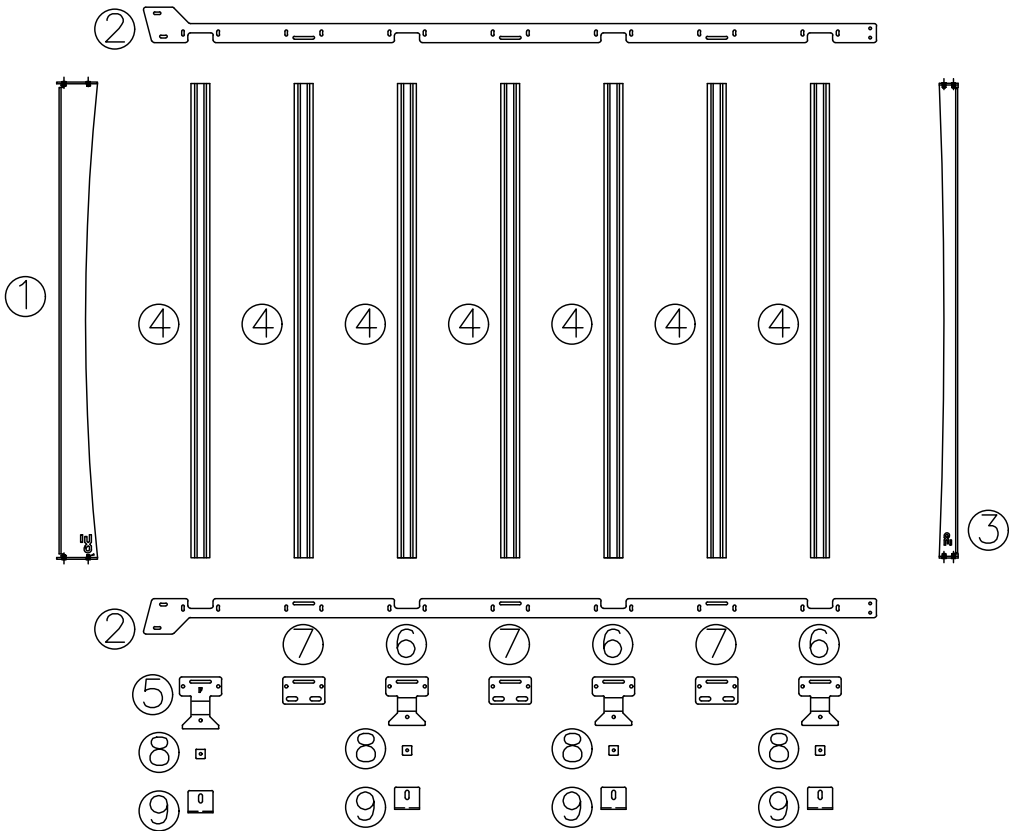
**\*POWER TOOLS CAN BE USED, BUT DO NOT OVERTORQUE HARDWARE!**

## Purposeful Movement.

Table of Contents:

- Page 1: Cover of instruction manual
- Page 2: XJ Rack with short bracket diagram
- Page 3: XJ Rack with tall bracket diagram
- Page 5: Side bracket components, install, and orientation
- Page 6: Identifying each rain gutter bracket
- Page 7 – 8: Safety and installation considerations before beginning install.
- Page 9 – 11: Installation instructions & Considerations
- Page 12: Maximum Load Ratings

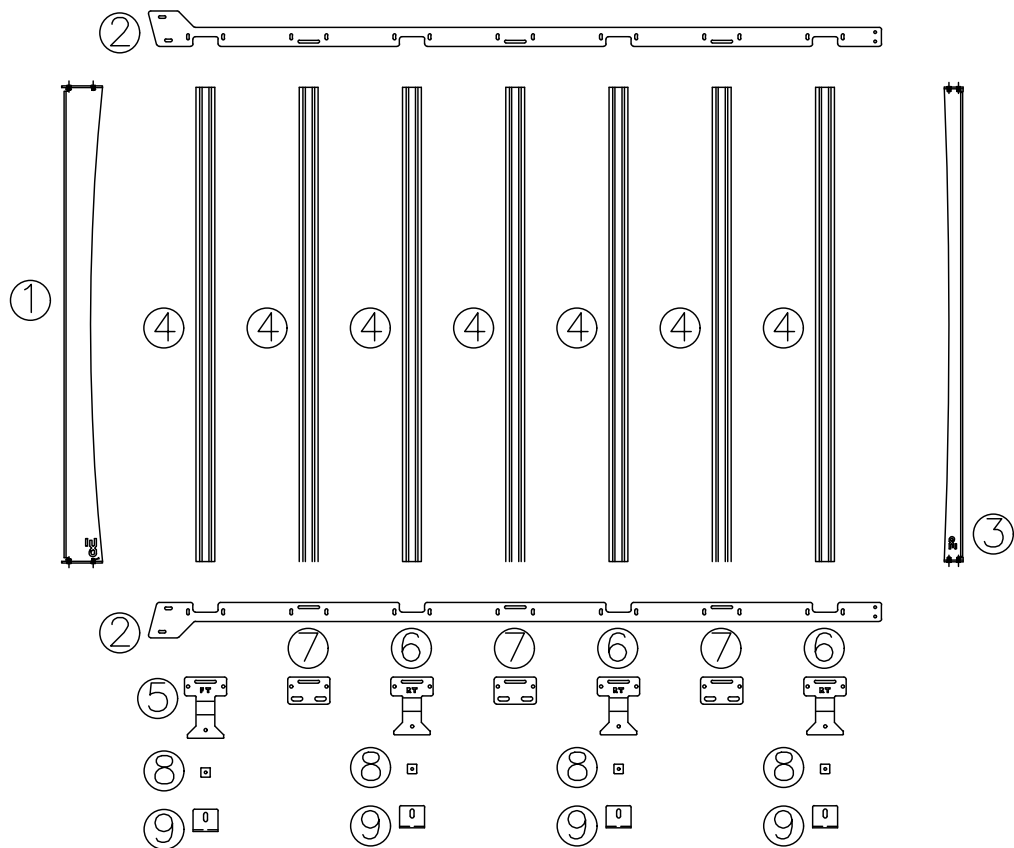
XJ Overland Roof Rack with Short Rain Gutter Brackets: (Note: We offer short version with either black or silver anodized extrusions)



XJ ROOF RACK WITH SHORT BRACKETS  
COMPONENT LIST (HARDWARE LISTED ON SEPARATE PAGE)

12			
11			
10			
9	XJ-RMOUNT-CLAMP	14GA BENT RAIN GUTTER CLAMPS (STEEL)	8
8	XJ-RMOUNT-SPACER	$\frac{5}{16}$ " STAINLESS STEEL SQUARE SPACERS	8
7	XJ-RMOUNT-SIDEBRKT	$\frac{3}{16}$ " STEEL FLAT SIDE BRACKETS/SPACERS	6
6	XJ-RMOUNT-REAR	$\frac{3}{16}$ " STEEL BENT REAR MOUNTING BRACKETS	6
5	XJ-RMOUNT-FRONT	$\frac{3}{16}$ " STEEL BENT FRONT MOUNTING BRACKETS	2
4	XJ-EXTR-BLK OR XJ-EXTR-SILV	SILVER OR BLACK T SLOT EXTRUSIONS (PER ORDER)	7
3	XJ-RACK-REARSHIELD	$\frac{3}{16}$ " ALUMINUM BENT REAR SHIELD	1
2	XJ-RACK-SIDERAIL	$\frac{3}{16}$ " ALUMINUM FLAT SIDE RAIL	2
1	XJ-RACK-FRONTSHIELD	$\frac{3}{16}$ " ALUMINUM BENT FRONT SHIELD	1
DIAGRAM #	SKU	DESCRIPTION	QTY

XJ Overland Roof Rack with Tall Rain Gutter Brackets: (Note: We offer tall version with either black or silver anodized extrusions)



XJ ROOF RACK WITH TALL BRACKETS  
COMPONENT LIST (HARDWARE LISTED ON SEPARATE PAGE)

12			
11			
10			
9	XJ-RMOUNT-CLAMP	14GA BENT RAIN GUTTER CLAMPS (STEEL)	8
8	XJ-RMOUNT-SPACER	$\frac{5}{16}$ " STAINLESS STEEL SQUARE SPACERS	8
7	XJ-RMOUNT-SIDEBRKT	$\frac{3}{16}$ " STEEL FLAT SIDE BRACKETS/SPACERS	6
6	XJ-RMOUNT-REAR-TALL	$\frac{3}{16}$ " STEEL BENT REAR MOUNTING BRACKETS	6
5	XJ-RMOUNT-FRONT-TALL	$\frac{3}{16}$ " STEEL BENT FRONT MOUNTING BRACKETS	2
4	XJ-EXTR-BLK OR XJ-EXTR-SILV	SILVER OR BLACK T SLOT EXTRUSIONS (PER ORDER)	7
3	XJ-RACK-REARSHIELD	$\frac{3}{16}$ " ALUMINUM BENT REAR SHIELD	1
2	XJ-RACK-SIDERAIL	$\frac{3}{16}$ " ALUMINUM FLAT SIDE RAIL	2
1	XJ-RACK-FRONTSHIELD	$\frac{3}{16}$ " ALUMINUM BENT FRONT SHIELD	1
DIAGRAM #	SKU	DESCRIPTION	QTY

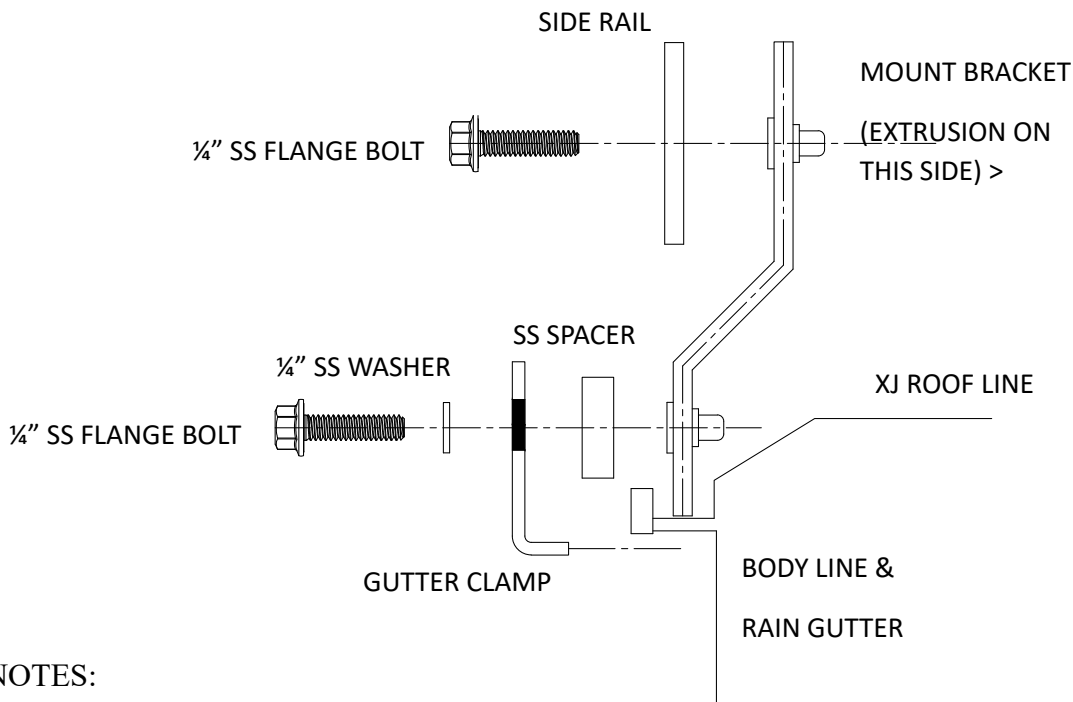
Hardware Included with EACH XJ Overland Roof Rack:

- (72) ¼"-20 X 1" Flange Hex Bolts (Stainless Steel)
- (8) ¼" Stainless Steel Flat Washers (For bolts going through steel gutter clamps)
- (ONE) Tube of BLUE Thread Locker

**\*PRIOR TO BEGINNING INSTALLATION, VERIFY ALL COMPONENTS AND HARDWARE PARTS ARE ACCOUNTED FOR. EMAIL US BEFORE INSTALLATION IF ANY COMPONENTS ARE MISSING OR DAMAGED FROM TRANSIT\***

Attaching the Roof Rack to the Rain Gutter:

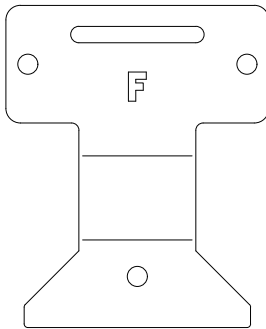
The Side Brackets will rest in the rain gutters. At each side bracket location, there will be a stainless-steel spacer and a clamp. The Stainless-steel spacer goes **BETWEEN** the clamp and the side bracket. A ¼"-20 Stainless Steel Flange Bolt will go through the clamp, the spacer, and thread into the side bracket. Please see the basic diagram below for reference.



**\*NOTES:**

- Torque these bolts to 15-foot pounds. **DO NOT OVER TIGHTEN!** Blue Thread Locker **MUST** be applied **PRIOR** to torquing these bolts.
- Ensure side bracket is **FULLY** down into the rain gutter.
- Ensure the clamp is pressed **FULLY** against the bottom of the rain gutter before torquing to spec.

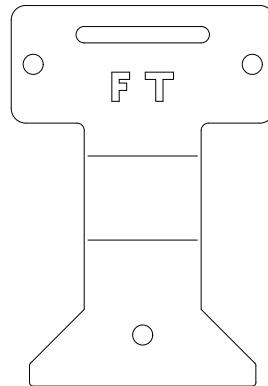
**- The Clamps MAY deform your rain gutter from pressure. This is to be expected. TO AVOID RAIN GUTTER RUST, YOU MAY NEED TO TOUCH UP SOME SPOTS.**

**Rain Gutter Bracket Attributes:**

Standard Height (Low) Front  
Bracket ("F" Cut into part)

PN: XJ-RMOUNT-FRONT

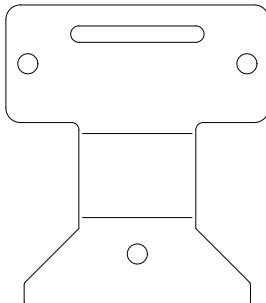
(2) QTY when ordered this style



TALL Height Front Bracket  
("FT" Cut into part)

PN: XJ-RMOUNT-FRONT-TALL

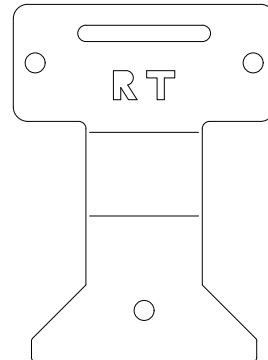
(2) QTY when ordered this style



Standard Height (Low) Rear  
Bracket (NO MARKINGS)

PN: XJ-RMOUNT-REAR

(6) QTY When ordered this style



TALL Height Rear Bracket.  
("RT" Cut into part)

PN: XJ-RMOUNT-REAR-TALL

(6) QTY When ordered this style

**Safety Considerations/ General Considerations prior to beginning installation:**

- 1.) Installing a roof rack on your vehicle changes the handling characteristics. YOU MUST DRIVE YOUR VEHICLE CAREFULLY AFTER INSTALL TO LEARN ITS NEW HANDLING CHARACTERISTICS.
- 2.) Installing any roof rack or accessory like roof racks often may void any factory or additionally purchased warranties.
- 3.) Verify with warranty company and insurance company prior to installation to ensure this accessory complies with your agreed upon terms and conditions.
- 4.) Installation of components on your vehicle may cause blemishes on your paint and finishes. EXODUS OVERLAND IS NOT RESPONSIBLE FOR ANY AMOUNT OF DAMAGE THAT OCCURS TO YOUR VEHICLE AS A RESULT OF THE INSTALLATION OF ANY OF OUR PRODUCTS. BY PURCHASING AND INSTALLING OUR PRODUCTS, YOU AGREE TO HOLD EXODUS OVERLAND AND ITS AFFILIATE COMPANIES HARMLESS. YOU ARE SOLELY RESPONSIBLE FOR THE SAFE AND PROPER INSTALLATION OF ANY EXODUS OVERLAND PRODUCT YOU PURCHASE AND DESIRE TO USE.
- 5.) Always wear approved eye and hearing protection whenever using hand or electric tools.
- 6.) PINCH HAZARD: Tightening clamps and bolts could result in pinch conditions. ALWAYS keep hands, fingers, and body parts AWAY from components that are bolted together to avoid injuries
- 7.) Lifting hazards: Steel and aluminum components are often heavy. ALWAYS be sure to use 2 or more individuals when lifting heavy objects. Be sure to always lift carefully and safely.
- 8.) Overloading the roof of your vehicle is dangerous. Refer to and adhere to roof loads as listed in your vehicles factory manual. While our roof racks and other storage systems are capable of handling massive amounts of load, these capabilities MAY exceed the factory rating of your vehicle. In these instances, ALWAYS adhere to the published factory information and load ratings. NEVER EXCEED THESE RATINGS, REGARDLESS OF WHAT YOU SEE EXODUS OVERLAND OR OTHERS DOING OR SHOWCASING. EXODUS OVERLAND PUBLISHES MARKETING AND PROMOTIONAL MATERIALS TO SHOWCASE EXTREME TESTING CONDITIONS. UNDER NO CIRCUMSTANCES SHOULD YOU REPLICATE EXTREME CONDITIONS AND TESTS AS SHOWN BY EXODUS OVERLAND ON YOUR OWN VEHICLE.
- 9.) Rain Gutter Conditions: Your rain gutters MUST be in factory new condition. If ANY rust or broken spot welds are seen, you MUST seek professional repairs BEFORE mounting a roof rack. Disregarding this COULD result in serious injury or death.
- 10.) Vehicle rollover warning: Heavy loads on top of a vehicles roof will adversely affect handling, regardless of lift height or tire size. Higher chances of rollover are possible with large loads on top of a vehicles roof. Read and follow your factory vehicle manual for guidance and requirements when carrying roof top loads and gear.
- 11.) Wind noise: Wind noise is unavoidable when installing a roof rack. While our roof racks are designed to MINIMIZE wind noise (whistling, rushing, whooshing, and other noises), nothing will eliminate it entirely. This is normal and should be expected.

- 12.) Over torquing hardware: NEVER exceed our posted torque specifications during installation. YOU MUST USE A TORQUE WRENCH! Over torquing bolts WILL result in stripping threaded components. Stripped components are NOT covered under warranty as they are always a result of over tightening components.
- 13.) Thread Locker: Thread locker is included with every roof rack. This is NOT an optional step. YOU MUST USE THREAD LOCKER to avoid components loosening up during use. Failure to do this CAN result in components working loose and falling off your vehicle while driving. DO NOT SKIP THIS STEP! THIS IS AN EXTREME SAFETY CONCERN, TAKE IT SERIOUSLY!
- 14.) INSTALLATION SHOULD ALWAYS BE PERFORMED BY A TRAINED PROFESSIONAL.
- 15.) All roof loads should ALWAYS be spread out across the ENTIRE roof rack. Concentrated and focused loads on individual brackets CAN result in damage to pinch seams, mount locations, and rain gutters. EXODUS OVERLAND IS NOT RESPONSIBLE FOR FAILED MOUNTING LOCATIONS AND COMPONENTS.

Warranty Information: For warranty information, please visit: <https://exodus-overland.com/warranty/>

In the event that a warranty claim is accepted, the extent of the warranty will be the replacement cost of the product that has failed. No cash payouts or refunds are applied as a result of accepted warranty claims.



Complete Assembly Instructions:

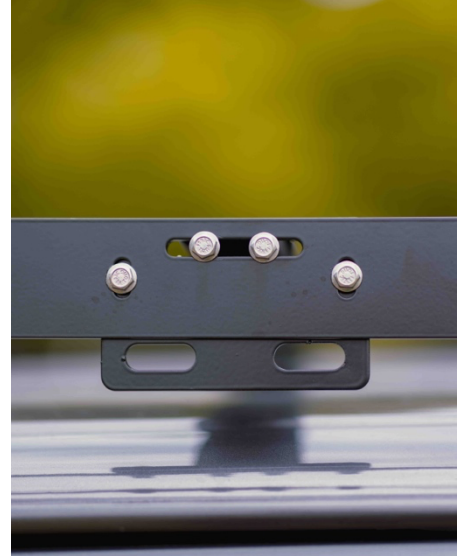
\*You will install the entire rack LOOSELY on the ground. Then you will lift with 2 people ONTO the jeep where you will perform the rest of the steps.

On the ground:

- 1.) Begin first by taking inventory of all components and hardware
- 2.) If ANYTHING is missing, please email us at [CS@Exodus-Overland.com](mailto:CS@Exodus-Overland.com) before beginning.
- 3.) Fully read these instructions and ensure you understand them. If you do not understand the instructions or you do not have tools, please have a professional mechanic install your roof rack.
- 4.) Have your XJ inspected and verify that your rain gutters are in factory LIKE NEW condition. This is non-negotiable! If you have rust on your rain gutters or the spot welds are broken DO NOT INSTALL THIS ROOF RACK! YOU MUST FIX THESE STRUCTURAL ISSUES AT A PROFESSIONAL BODY OR MECHANIC SHOP FIRST!
- 5.) Find a wide-open area to lay all the parts. Ensure the ground is not rough or you may scratch or chip the powder coat.
- 6.) Start by Taking your front shield, rear shield, and both sides and bolting them lightly together.
  - a. The front shield is physically larger than the rear shield
  - b. Only hand tighten the bolts and do not make them fully snug yet
  - c. Be sure that the front and rear shields are aligned with the angle of the side rails
- 7.) Next, Install the two front brackets into the side rail locations.
  - a. The front rain gutter mounts are taller than the rear.
  - b. Please note the orientation and notes on page 5 for proper bracket install
  - c. See page 6 for images to assist in identifying which brackets are which
- 8.) Install the remaining (6) Rear Brackets
  - a. The rear gutter mounts/brackets are shorter than the two front brackets



- 9.) Install all 6 tie down brackets/spacers into correct locations.
  - a. Tie down brackets are placed in the side rails between EACH rain gutter mount. See location of these brackets on pages 3 – 4.
  - b. See image on right of page >
- 10.) Install all Extrusions and lightly tighten all bolts
  - a. **DO NOT FULLY TIGHTEN BOLTS AT THIS TIME!** Leaving bolts only lightly snug will allow flexibility when installing into your rain gutters!
- 11.) Visually inspect hand tightened components.  
Ensure no pieces are missing bolts to avoid parts dropping and damaging your vehicle during installation.
- 12.) With another person, lift the entire roof rack assembly onto your vehicle.
  - a. Ensure that the rack is positioned properly front to back
  - b. Open hatch and ensure the rack is not too far back as to interfere with opening hatch
  - c. Make necessary adjustments front to rear to ensure proper hatch operation
  - d. Ensure that EACH rain gutter mount is FULLY seated into the rain gutter.
- 13.) Install clamps and spacers at all (8) mount locations
  - a. Note the graphic of proper orientation of parts found on Page 5.
  - b. WASHERS should be used on the clamp bolts to avoid damage to powder coat which could result in rust forming on the Clamp Bracket.
    - i. Washers are NOT necessary on other bolt locations
  - c. Clamps should be pushed UP AGAINST the bottom of the rain gutter/pinch seam to ensure proper clamping pressure when tightening the bolts.
  - d. **BEFORE FULLY TIGHTENING RACK, ENSURE DOOR CLEARANCE IS MAINTAINED FROM CLAMPS. OPEN EACH DOOR SLOWLY, CHECK FOR OBSTRUCTION FROM THE CLAMPS. IF CLAMPS WILL PREVENT PROPER DOOR FUNCTION, REMOVE ROOF RACK ASSEMBLY AND CONTACT US BEFORE PROCEEDING.**
- 14.) Ensure the rack is square on your XJ roof. When you are happy with the final resting location of the rack, remove each bolt one at a time from the clamp locations. Apply Blue Thread Locker to each bolt, then torque to 15-foot pounds.
- 15.) After the clamps are tightened fully, remove each bolt individually on the rack assembly, apply blue thread locker and torque to 15-foot pounds.
- 16.) Ensure the front shield is aligned properly with the side rails. Torque bolts to 15-foot pounds
- 17.) Ensure rear shield is aligned with side rails, torque bolts to 15-foot pounds  
AFTER applying blue thread locker
- 18.) Ensure all extrusions are centered in the side rail slots, torque bolts to 15-foot pounds AFTER applying blue thread locker.



- 19.) Perform one last visual inspection of the roof rack. Verify FULLY that all hardware is installed, that all brackets, clamps and bolts are torqued properly. Feel the rack and components. The entire assembly should be very stiff and rigid.
- 20.) You can now enjoy the looks and functions of your new XJ Overland Roof Rack.



#### Roof Top Tent Considerations:

When installing a roof top tent, follow manufacturer directions. In some instances, you MAY need to remove extrusions, install onto your tent, then lower the tent onto your roof rack and bolt into place. If you have questions during your installation, please email us at [cs@exodus-overland.com](mailto:cs@exodus-overland.com).



### Maximum Loads and Considerations:

- Definitions:
  - o Static Load: A load placed on a vehicle when in a perfectly level, stationary position. Vehicle must be secured by placing in park (or first gear if a manual transmission) AND applying the parking brake. Additionally, in offroad conditions wheel chocks or wheel blocks are required to utilize maximum roof rack load.
  - o Dynamic Load: A load placed on a vehicle when the vehicle is driving on regular paved road surfaces.
  
- Maximum Static Load Rating of roof rack: 600 Pounds
- Maximum Dynamic Load Rating of roof rack: 200 Pounds

**\*NEVER FOCUS LOADS ON SINGLE POINTS ON THE ROOF RACK, COMPONENTS OR EXTRUSIONS. BEND COMPONENTS OR COMPONENT FAILURES MAY RESULT. \***

While our roof racks MAY be capable of holding even higher loads, YOUR vehicle is not up to that task!

If you have any other questions, please feel free to email our team and we'll be able to further assist you with setting up your new target system.

Customer Service Email: [CS@Exodus-Overland.com](mailto:CS@Exodus-Overland.com)

Exodus Overland

PO Box 212

Womelsdorf, PA 19567